

### **Chapel House**

The wooden worktop and wooden shelves in the kitchen were refurbished . The kitchen sink had been draining poorly for some time, with occasional blockages. After some plumbing work this seems to have been resolved but this needs to be monitored. We have installed a new American style fridge-freezer. The toilet drains in the house have to be monitored as there are small blockages and water builds up in the toilets and showers, when more than one person staying in the chapel house.

### **Guild Room Renovation**

All walls, ceilings and doors in Guild Room and in the adjacent toilet and porch have been repainted. The lights have been exchanged for modern LEDs and a new carpet has been fitted. An old radiator in the toilet was replaced.

The Guild Room is now used by two groups - the Church Choir and the After School Care.

The fence between the chapel house and the garage has been taken down and a new fence erected in a better positioned, stained with preservative.

### **Parish Centre Car Park**

The tarmac in the car park is in poor condition. A section of the low wooden fence adjacent to the car park was broken: it is now fixed.

A brand new storage container has been given to our parish to use for the Ukraine appeal for as long as we need it. We thank Mr Ged Gaffney for this. The container will be returned to him when the appeal ends.

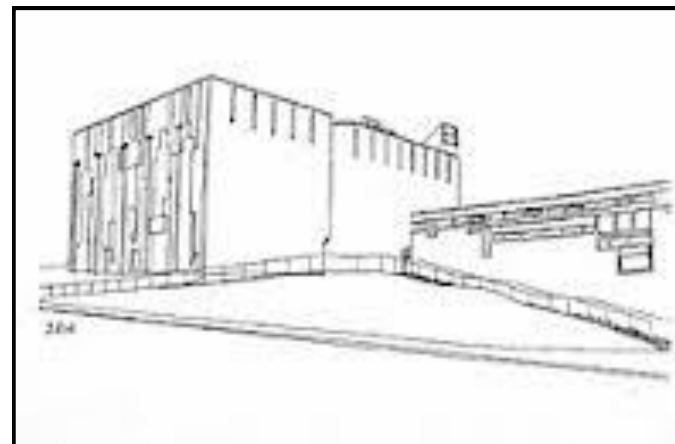
### **Bank Balances**

The Parish bank account balances as of 31 July 2022 were as follows:  
Parish—£31,565.51; Hall—25,943.76; Club200—£9,836.67.

**We thank all parishioners for their generosity and continued help and support. There is plenty to be thankful for in our church community.**

## **ST BRIDE'S CHURCH**

### **EAST KILBRIDE**



## **FABRIC UPDATE**

**31 August 2022**

This update provides information about activity relating to the fabric of the church buildings, including the Chapel House and the Parish Centre. This is the first update on fabric we have provided since February 2022.

### **Church**

A new chalice and two new ciboriums have been bought for the church and parish.

On the roof of the church the glass in two vertical window panels have cracked. We do not know what might have caused this so we are monitoring the problem. There is a safety footpath across the external roof. There is a small soft spot under the cover which might mean there is an issue with the plywood support underneath.

In the church, all three confessional boxes have been renovated. The walls have been repainted, all lamps have been exchanged for LEDs and new carpets have been fitted. There were some damaged floor bricks between the piazza entrance and the confessional boxes were creating a trip hazard and have been repaired.

A certified copy of the Divine Mercy painting from Sister Faustina's convent in Cracow was donated by a parishioner. It has been placed on the altar wall in the side chapel next to the statue of St John Paul II.

### **Church Surrounds**

Individual missing and damaged bricks on the Whitemoss Avenue steps have been exchanged.

We will be locking the padlock on the entry gate between Platthorn Drive and the piazza as the High School students are using this as a shortcut to Whitemoss Avenue and then cut across the road causing traffic issues. Further, some pupils are slamming the gate. The piazza will be more secure if the gate is padlocked after services.

In Sister Sheila's garden, we erected a Celtic Cross in memory of Canon Ryan This was blessed on the 6th anniversary of his death—3rd June 2022. We will place a steel plaque at the bottom of the cross to commemorate this occasion.

We hope to plant some trees near the Hall which will probably be supplied by the Woodland Trust. We are also researching the possibility of having a community garden in the area between the Church and the Parish Centre. Once we have positively researched all these possibilities, we will organise an open meeting in the parish to discuss this wider.

Since September last year, a new gardener (one of our parishioners) has been looking after our grounds very well. We are in the process of cutting down some trees at the back of the garage because the roots are damaging the rear garage wall and we have taken down other bushes between the garage and the Chapel House beyond the Cap Park. Our gardener will tidy up the garden area after the cut trees have been cleared in the next couple of weeks.

All the steel black railings around the Church and Chapel House have been repainted and the plastered wall between the Parish Centre and the Church has been given an additional coat of paint.

### **Parish Centre**

A piano was donated by Cathkin Care Home. This has been placed at the rear of the main hall. We also have Gertrude McDonnell's piano in the Church House. Both will be fully checked and retuned.

The source of the leak on small roof on the south side of the hall has been identified. The grille on the downpipe was clogged with leaves and accumulated dirt and the blockage caused the gutters to overflow. This reinforces the need for regular maintenance.

We have installed a permanent HDMI cable to the laser projector to make it easier to connect to the projector. One of the speakers in the Main Hall is not working. We hope to fix it.

We will be exchanging ceiling lamps in the corridor for LEDs. We will also be replacing a number of damaged or discoloured ceiling tiles mainly in the cloakroom, the small room, the toilets and the corridor. A new American style fridge-freezer has been bought for the kitchen.

We already have a good number of bookings in our Parish Centre and there is increasing interest in using its as a venue different events. The improvements will help ensure continuing demand

We are grateful to our hall team for their fantastic work.