

Chapel House

The boiler which supplies heat and hot water to the Chapel House, Sacristy and Library broke down in December 2021. The new necessary extractor fan has been installed.

The sink in the kitchen was totally blocked for over a year. We had contacted a number of plumbers and engineers looking at this issue. This will finally and hopefully be fixed at some point after Easter 2022. It requires quite extensive repair of the pipework – essentially a design issue from the original build.

The house has a flat roof and the cover has never been fully replaced. It is prone to ongoing leaks in the Canon's room and on the corridor and needs repeated repairs.

There are exactly 222 original external windows in the sacristy and house complex which are fitted with the original single glazed panes. They will need repair at some stage with double or triple glazed units that will save on heating costs.

Car Park

The car park near the hall belongs to the parish. The state of its tarmac is not in a very good condition. For many years we have experienced people from wider high school community (parents and teachers) using our car park without consulting us. We have to stop the unauthorized use of the parish car park because this worsens the quality of tarmac and the church car park is primarily for the use of our parishioners. We don't have 'spare' money to relay the tarmac or to fund parking for the high school community. We will renovate a parish car park notice board by putting wording stating that unauthorized parking might result in cars being locked in.

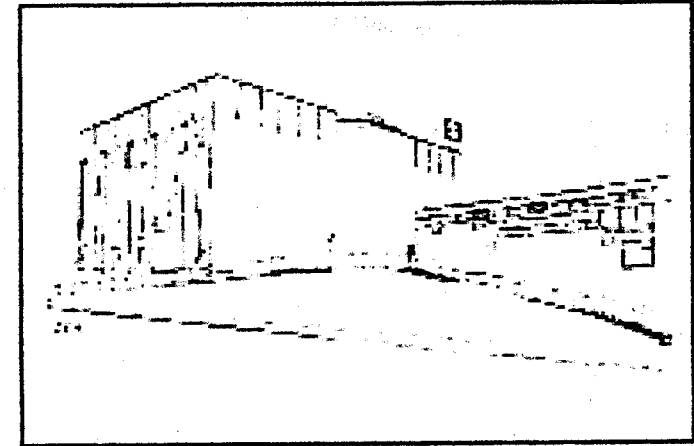
Visits to the church

We still experience ongoing visits to the church, mainly from architects and their students; but also from occasional tourists. We welcomed two parties of 40 and 60 students (split into groups) in November 2021, for example.

We thank all parishioners for their generosity and continued help and support. There is plenty to be thankful for in our wonderful church community.

ST BRIDE'S CHURCH

EAST KILBRIDE



FABRIC UPDATE

February 2022

This update provides information about activity relating to the fabric of the church buildings, including chapel house and the Parish Centre. This is the first update on fabric we have provided since November 2020.

Church

Hot air blowers at both external entrance doors (Piazza and Plattthorn Drive) cannot be used during the pandemic.

The radiant heaters have been serviced and are all back in operation. One heater had to be fixed (a faulty valve). In total, three faulty valves in our heaters had to be exchanged.

We still have a leak at the north-west corner of the church directly above the ramp. This has been reported several times to the diocese and about three years ago with very little response from the diocese. We are waiting for the information from the diocese on how and when it will be repaired.

Security cameras have been installed at both church entrances. We installed superfast WiFi internet in the church allowing us to live-stream services better. Two live-stream cameras have been installed in our church and they await to be fully programmed to begin the live streaming. On the left side of the nave we have two laser projectors and folding screens (one at the altar, one midway down the nave) to replace hymn books and missalettes. Projectors are connected to the internet and to the sound system in our church.

We are still using a COVID-related one-way system for entrance and exit. You can now log your contact details using your phone at the piazza entrance (QR Code).

We are designing handrails for installation at various stepped locations to aid mobility.

We are arranging for a new tabernacle stand as the existing stand at the back of the altar has suffered some water damage over the years.

In the area close to the piazza entrance we had to exchange some 12 bricks on the floor as it was a hazard.

Church Surrounds

A number of edging bricks on the Whitemoss Avenue ramp are damaged and need replaced.

There was some work carried out in the garden and piazza on a community service arrangement by South Lanarkshire Council.

We hope to plant some trees near the Hall which will probably be supplied by the Woodland Trust.

Since last September we have a new gardener who is our parishioner and who has been looking after our grounds very well.

We are researching the possibilities of having a community garden in the area between the church and the hall. We are also researching the grant funding opportunities for the community garden. Once we have positively researched all these possibilities, we will organise an open meeting in the parish to discuss this wider.

All electrical devices in the church, chapel house and the hall have been positively pat tested (163 items).

Parish Centre

The steel roof has been fully repainted twice with a special anti-rust paint. The gutters are now cleared periodically to allow free flow. One of them was blocked; but it has been cleared along with drains.

New heat and smoke detectors have been installed.

Part of the wooden floor in the main hall had lifted because of water penetration. This has been repaired.

The radiators have been serviced and are all working again.

New lighting was installed in the big room.

We now have a wifi internet. A new laser projector and a screen have been installed and this can also link to the wi-fi system and sound system.

There are a number of damaged or discoloured ceiling tiles which need to be replaced in some rooms.

We are planning to exchange lights in the corridor.

We have a new shelf in the cloak room for the priest's vestments and for the pe system.

One of the speakers in the big room does not work (the closest to the roundabout). We hope to fix it soon.

The boiler and the heating system in the hall has been now fixed and it's working properly.

A new chest freezer has been bought.

We experience a good number of bookings in our parish hall.