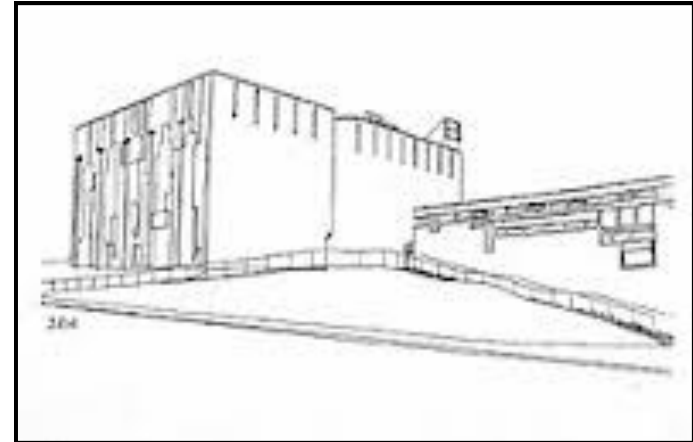


## PRAYER

Lord Jesus Christ,  
make us serve you and others  
without pushing ourselves forward  
so that we may help  
our fellow men and women  
without humiliating them.  
Make us dedicate ourselves  
to everything that is lowly  
and unimportant in the world's eyes,  
so that we may do the things  
that no one else takes on.  
Teach us to wait, to listen  
and not to speak prematurely.  
Make us humble enough  
to accept help from others.  
You alone know  
how our life can truly succeed.  
Teach us in the silence of your  
presence to reverence this mystery.

*The God who won't let go*  
Fr. Peter Van Breemen SJ.  
Ave Maria Press, USA

## **ST BRIDE'S CHURCH EAST KILBRIDE**



**PARISH TOGETHER COMMITTEE**

**May 2015**

## Background

There are two main impacts that arise from the major works:

- 1) Building-related aspects, e.g. liaising with the Diocese and lead architects when necessary, pursuing building grants and working with grant authorities, building a permanent archive (needed to satisfy Heritage Scotland) and fund-raising activities.
- 2) Keeping the parish together (over the period of church closure). The church will close in August or September, so that the site can be secured for the major works to commence. It will be closed for at least 12 months, but projects tend to over-run. We need to establish what we need to do to keep the parish community together and strong over the period of closure.

To mirror these two aspects, it is desirable to set up two separate committees – a Fabric Committee and a Parish Together Committee. This note is about the Parish Together Committee.

## Parish Together Committee

This involves both spiritual and practical aspects.

- a) The most obvious need is to work out where to hold services. We can use the Parish Centre for some services, e.g. weekday masses, when congregations are smaller. But, size limitations mean the centre is too small for Sabbath services. The Parish Centre is also heavily used by the wider community, particularly on weeknights, and we do not wish to lose their custom or the income they generate (potentially permanently).

- b) The proposal by Fr Ness with support from many parishioners is to use the school (St Andrew's and St Bride's) each weekend and we are already investigating what that involves and the cost. This would preserve continuity of location, it means we can continue to offer Children's Liturgy close by, and there are good facilities for parking.
- c) However, having a location available does not make it appropriate for services. There will be work required to prepare the area for services, and we will need arrangements to look after those attending, if we want to make the congregation happy to attend. Experience elsewhere suggests that once parishioners drift to other churches or stop attending, it is very difficult to get them back.
- d) We need to work out how to accommodate baptisms, weddings, funerals and sacraments, e.g. first reconciliation, first communion, confirmation, etc., as well as weeknight services when we may not have availability of the Parish Centre.
- e) The community is greater than the church buildings. We need to ensure continuity for all of the groups which operate in the parish and whether they may be affected by closure of the church building.
- f) We also need to consider fundraising activities (to complement any work the Fabric Committee are undertaking).
- g) There will be other aspects we have not yet considered.

So, we need people to come forward explicitly to serve on this Committee to lead the congregation on all of the above. Please speak to Father Ness or Deacon John if interested.