

**Expenditure (cont).**

Office management costs of £4,973 arose from:

Printing, stationery and admin	2,515
Repairs and maintenance	437
Bank charges	291
Professional fees (audit)	1,730

Diocesan management costs amounted to £28,042, as follows:

Diocesan levy	17,912 (based on 26% of ordinary income)
Interest on parish loan	10,130

Although the diocesan levy rate increased from 22% to 26% in 2017, we can reduce our ordinary income by loan repayments (£1,000 per week) before applying the levy.

**Overall Picture for 2018**

Ordinary income of £222,355 compares with expenditure of £198,806. There are still some unusual amounts shown in this statement (principally capital expenditure and grants) arising from earlier renovation works. Calendar 2018 accounts were more “normal” than in recent years when grants and major expenditures from church and hall renovations influenced results.

There is no allowance being made in these numbers for depreciation—an accountancy term which covers things like wear and tear on assets. We need to have reserves built up to meet replacement costs for fixtures and fittings. For example, we are currently replacing some of the church heaters which were not functioning and have gradually been upgrading the lights with more modern LED lighting which is less costly to run.

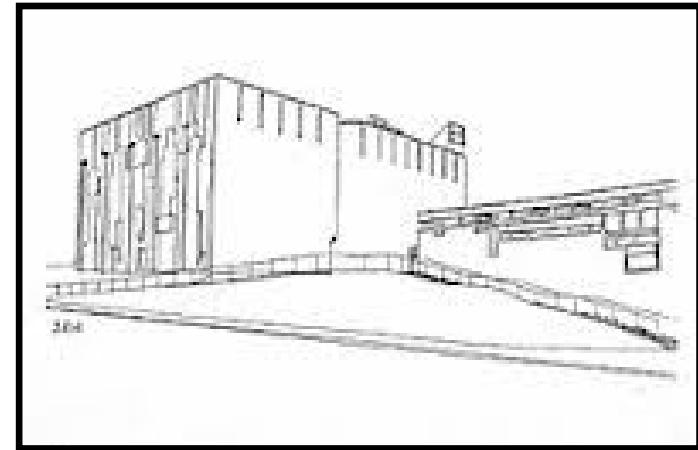
Donations are always welcome, and can easily be gift aided, increasing their value. From time to time, we also benefit from legacies. And, if you have fundraising ideas, we are always keen to hear about them.

**Questions and thoughts**

If you have questions about this report we will try to answer them, although we might need to investigate before replying. Please let us know if you have found this information helpful. If it is difficult to interpret or you think we could present the information better, please let us know.

**We thank you for your generous and continued help and support in our parish.**

# ST BRIDE'S CHURCH EAST KILBRIDE



## REPORT ON FINANCES

July 2019

## Overall Picture of Parish Finances

This is the financial update for our parishioners covering calendar year 2018. St Bride's is part of the Diocese of Motherwell, which is a registered Scottish charity in Scotland. All the churches in the Diocese report financial information to the Diocese in an agreed format. The figures in this summary are taken from our Diocesan report.

The main items in the report are the Income and Expenditure. There are also some Capital items relating to building works (church and hall), the grants for these works and our Diocesan Loan.

### Capital items

At the start of the year, our loan from the Diocese amounted to £457,449. Over 2018, we have been repaying the loan from our parish income at the rate of £1,000 per week. At end 2018, our Diocesan loan amounted to £405,449.

### Income

The Ordinary Income amounted to £210,452. In addition, special collections amounted to £11,903 which were remitted to the individual causes supported. Our Ordinary Income came from the following sources:

Weekly collections	117,872
Gift aid	17,480
Fundraising, Donations and Legacies	15,501 (incl Club 200 subscriptions)
Votive candles	3,752
Stall *	4,403
Hall lets **	16,396
Hall Bar and Catering **	25,022

\* The cost of goods sold in the Stall was £3,943 (see expenses opposite).

\*\* The running costs of the Hall are £25,166 (see expenses opposite).

### Club 200

In 2017, subscriptions amounted to £12,615, shown as part of Fundraising, Donations and Legacies (above). Prizes paid out were £3,000 (see opposite). This is less than the £3,600 expected as some prizes were re-donated.

## Expenditure

Expenditure, as identified below, amounted to £198,806.

Church expenditure was £18,029, as follows.

Divine service	4,566 (this is things like candles, etc.)
Repairs / maintenance	3,824 (includes deferred renovation costs)
Furnishing, vestments	456
Supply costs and fees	5,240
Stall goods *	3,943

House and grounds expenditure was £8,574, as follows.

House maintenance	644
Housekeeping	4,205
Furnishings	809
Ground maintenance	2,916

Utility costs for the church buildings amounted to £27,557, which includes heating, lighting, water, council tax and insurance. Some of each of these costs should be attributed to Hall costs (but not included there).

Heating and lighting	12,603 (includes £3,263 for hall)
Water rates	5,059 (includes £525 for hall)
Council tax	2,206 (church house only)
Insurance	7,689 (church, house and hall)

General parish management expenses, staff wages and some related items came to £21,484.

Clergy salaries, NI	2,915
Staff salaries, NI	8,940
Clergy development	958
Telephone	823
Travel	3,013
Parish gifts	655
High School Pastoral Fund	820
Club 200 prizes	3,360

Parish Centre running costs of £31,467 were made up as follows:

Wages	13,044
Heat, Light, Insurance	3,589 (included in Utilities above)
Hall Rates	.. 127
Cleaning	1,110
Bar and catering costs	10,105
Repairs and maintenance	1,942
Furnishings	1,550