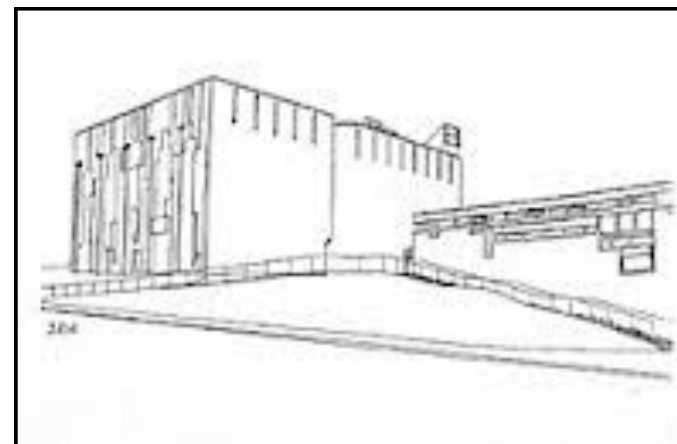


Special Collections (restricted funds)	- £1,673.23
Diocesan Levy	- £17,003.48
PIF Interest Payment	- £7,681.05
PIF Repayments (the parish loan)	- £53,000.00
Clergy Professional Development	- £524.64
Salaries & NIC (clergy)	- £3,078.00
Salaries & NIC (employees)	- £1,717.01
Telephone	- £826.41
Travel expenses & car insurance	- £1,140.57
Heat & light (overall)	- £13,639.72
Council Tax	- £2,322.04
Water Rates (overall)	- £2,535.99
Gifts from Parish	- £576.42
Fundraising Expenses	- £1,260.00
HMRC Furlough	- £3,786.51
TOTAL ANNUAL EXPENDITURE	- £150,681.69

In calendar year 2019 as a parish we made a profit of £940.31.

In calendar year 2020 we made a loss of £3,742.50 as the effect of the pandemic.

ST BRIDE'S CHURCH EAST KILBRIDE



REPORT ON FINANCES 2020

3 October 2021

INCOME

Church ordinary Income (collection)	- £91,577.50
Tax repayments on Gift Aid	- £17,229.70
Special Collections (restricted funds)	- £1,825.27
Votive Candles	- £691.38
Hall: Rental income	- £8,627.52
Hall: Bar/Catering Income	- £3,063.66
Fundraising (Club200)	- £10,855.00
Stall	- £1,403.65
Donations	- £2,658.38
Refunds	- £723.65
Other Income: HMRC Furlough	- £8,283.48
TOTAL ANNUAL INCOME	- £146,939.19

EXPENDITURE

Housekeeping	- £3,584.17
Chapel house Repairs & Maintenance	- £2,137.22
Church Repairs & Maintenance	- £3,281.74
Church Furnishing & Vestments	- £312.27
Church divine Service (incl. votives)	- £2,194.70
Stall	- £2,547.64
Supply (Visitor Priests & Organist)	- £4,000.00
Hall repairs & Maintenance	- £7,716.49
Hall furnishings	- £1,163.92
Hall bar/catering	- £1,401.00
Hall Cleaning	- £716.30
Hall staff wages	- £8,323.33
Telephone/internet	- £259.99
Grounds Management & Maintenance	- £706.72
Office furnishings & Equipment	- £101.79
Printing, Stationery & Admin.	- £1,269.79
Bank Charges	- £199.55